

How to install and configure Skype4i

Copyright © 2010 – 2015 JetLab S.r.l. All rights reserved.

4i is a JetLab S.r.l. trademark.

Microsoft, Windows, Windows NT, Windows XP, Windows Vista, Windows 7 and the Windows logo are trademarks or registered trademarks of Microsoft Corporation U.S. or other countries or both.

Java and all Java based trademarks and logo are trademarks or registered trademarks of Sun Microsystems, Inc. in the U.S. or other countries, or both.

UNIX is a registered trademark in the United States and other countries licensed exclusively through X/Open Company Limited.

IBM Server, IBM i5 iSeries 400, OS/400, IBM i, i5/OS for Power Systems, AS/400 are a trademark of IBM Corporation, U.S.

Other company, product, and service names, which may be denoted by a double asterisk (**), may be trademarks or service marks of others.

Contents

General Description.....	3
Requirements.....	3
Installation.....	3
Activation procedure.....	6
Verify Installation.....	8
Component analysis.....	9

General description

This white paper shows how to quickly and simply install *Skype4i*.

Requirements

These are the requirements needed in order to complete the activities proposed in this document.

- Access to an IBM i system through a *SECOFR class user.

Installation

These are the steps to install and configure *Skype4i*.

___ Step 1

Connect to an IBM i system as a *SECOFR class user.

___ Step 2

Verify that runtime *R400* is already installed on the IBM i system.

If the library JTJT040000 exists it means that the runtime utilized by *Skype4i* is already installed.

In this case run the following command.

```
ADDLIBLE LIB(JTJT040000)
```

and proceed with step 4, otherwise follow the next step.

___ Step 3

Install runtime R400

Download the file

<http://www.jetlab.com/downloads/r400/JTJT040000.zip>

JTJT040000.zip contains the save file JTJT040000.SAVF.

The save file then needs to be loaded onto the IBM i.

Open the JTJT040000 library from the save file in the last step

```
RSTLIB SAVLIB(JTJT040000) DEV(*SAVF) SAVF(QGPL/JTJT040000)
```

(the command assumes that the save file was loaded into the QGPL library)

Run the configuration command to complete installation

```
ADDLIBLE LIB(JTJT040000)
```

```
CONFIG LANGID(ITA) IP(<IP>) PORT(10000)
```

where

LANGID is the primary language of the runtime,

IP is the IP address of the IBM i,

PORT is the number of a free port. 10000 is the port number that is generally available.

Step 4

Install Skype4i

Download the file

<http://www.jetlab.com/downloads/skype4i/R4SK020000.zip>

R4SK020000.zip contains the save file R4SK020000.SAVF.

The save file then needs to be loaded onto the IBM i.

Install *Skype4i* by running the following command

```
ADDR4MOD SAVF(QGPL/R4SK020000) LIB(*SAVLIB) LANGID(ITA)
```

(the command assumes that the save file was loaded into the QGPL library)

where

SAVF is the parameter that indicates that the save file was loaded in precedence. It assumes that it was loaded into the QGPL library.

LIB is the name of the reloaded library. It assumes the name R4SK020000

LANGID is the primary language of *Skype4i*.

The procedure creates a R4SK020000 user with the same password.

Change user passwords along company guidelines.

Step 5

Activate the R400 runtime

Activate the runtime with the following command

```
STRSBS SBSD(JTJT040000)
```

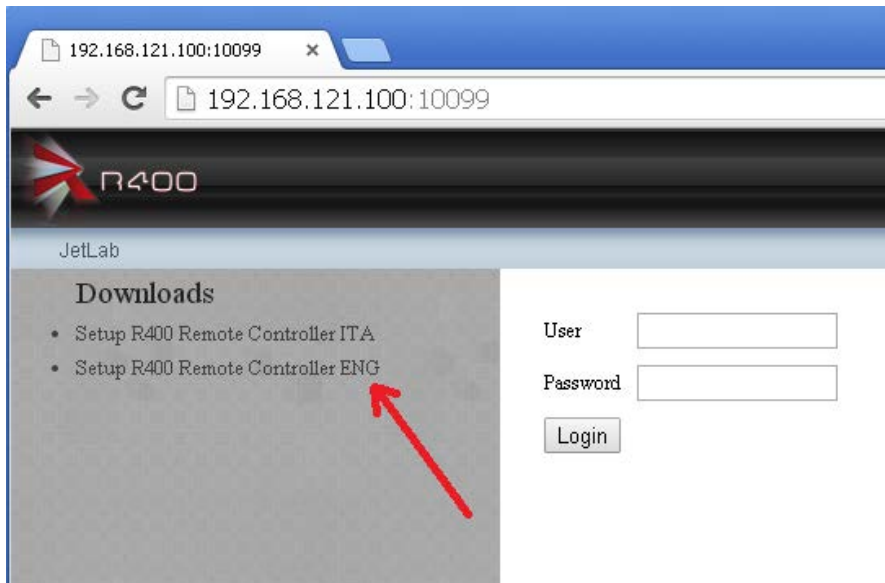
Step 6

Install the R400RemoteController

Go to

<http://<IP>:10099>

Install the program *R400RemoteController* necessary to activate remotely distributed Devices.



Follow the installation guide.

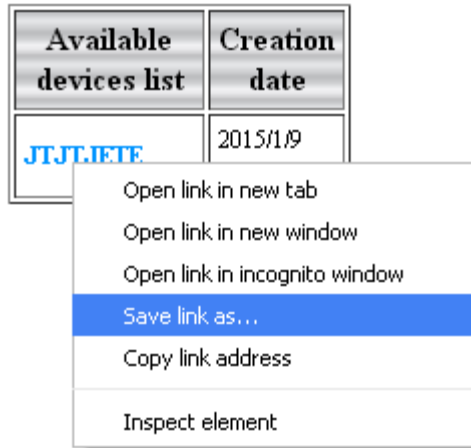
Step 7

Install the Device in the R400RemoteController

Set up a user name and a password.



A list of Devices created in the *R400* runtime is shown.



Proceed with downloading the Device and open the file.

The following window will open:



It could display the messages "The device is already installed" or "The Device was installed".

By clicking Ok, *R400RemoteController* will activate the Device.

In the notification area a green icon will appear when the *R400Device* is active:



Activation Procedure

If *Sype4i* has not been activated by the installation, use the following steps to activate the Device used to communicate with Skype.

___ Step 1

Activate runtime with the following command

```
ADDLIBLE JTJT040000  
STRSBS SBSB(JTJT040000)
```

___ Step 2

Activate the remote Device

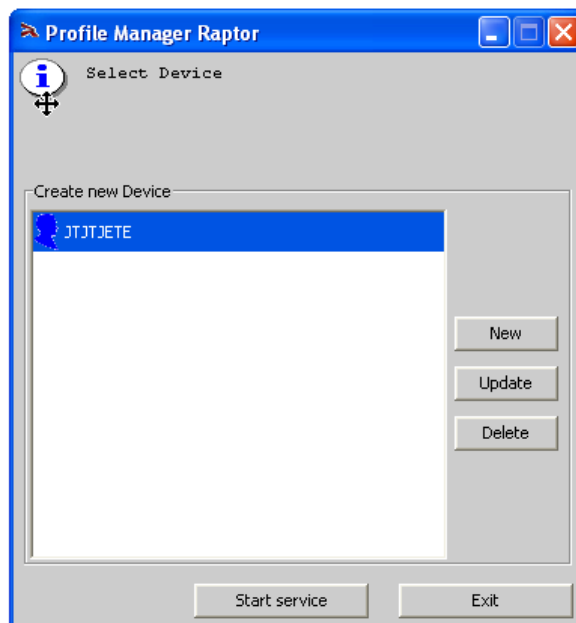
Activate *R400RemoteController*:

Run/All Programs/R400 Remote Controller/R400 Remote Controller

or by

clicking the icon on the Desktop

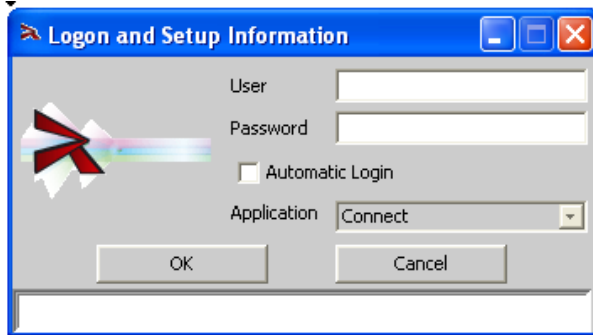
The following window is shown:



___ Step 3:

Select the *R400Device* to activate and click Activate Service.

The following Connect window is shown:



If it is unable to connect or the cancel button is clicked then the *R400Device* icon will be red, or not active.

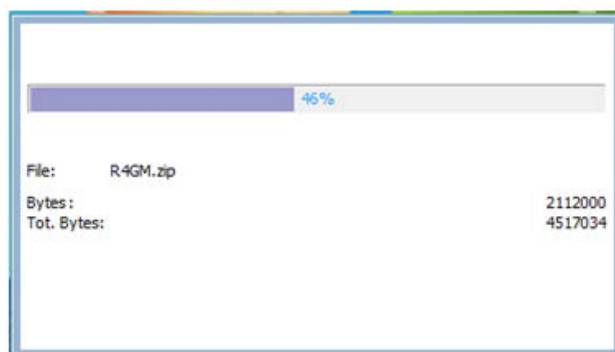


However, after successfully logging in, the *R400Device* will be green, or active:



Upon running the *R400Device* for the first time, the most recent *R400Module* will be installed.

In this case, a window similar to the following appears.



Let this procedure finish.

Verify the installation

Follow these steps to verify that *Skype4i* was installed and is running correctly:

___ Step 1

On the PC where the Device JTJT040000 was activated, Skype should also be running.



___ Step 2

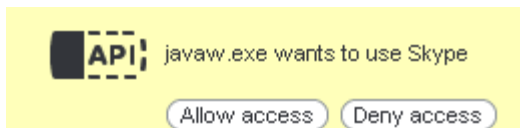
After following the activation procedure, connect to the IBM i and run the following commands

```
ADDLIBLE JTJT040000
```

```
ADDLIBLE R4SK020000
```

```
STRSKYPSVR SERVICE(*MESSAGE) DEVICE(JTJT040000) CNTCT_TYPE(*PROFILE)  
PROFILE('<skype_profile>') MESSAGE('Hello')
```

Skype will ask to be confirmed the first time it is used by the command. The following window is shown by Skype:



Click "Allow access".

The message Hello will be consigned to <skype_profile>; this should be an existing Skype profile.

Component analysis

Installation generates the following objects on the IBM i system.

Oggetto	Tipo	Descrizione
JTJT040000	*LIB	Runtime library. Manages the devices utilized by Skype4i
JTJT040000	*USRPRF	User that administers runtime.
JTJT040000	*DEVD	The device created by default
R4SK020000	*LIB	Library of Skype4i
/jetlab	*DIR	Directory containing the resources of the product.