



Copyright © 2010 – 2015 JetLab S.r.l. All rights reserved.

4i is a JetLab S.r.l. trademark.

Microsoft, Windows, Windows NT, Windows XP, Windows Vista, Windows 7 and the Windows logo are trademarks or registered trademarks of Microsoft Corporation U.S. or other countries or both.

Java and all Java based trademarks and logo are trademarks or registered trademarks of Sun Microsystems, Inc. in the U.S. or other countries, or both.

UNIX is a registered trademark in the United States and other countries licensed exclusively through X/Open Company Limited.

IBM Server, IBM i5 iSeries 400, OS/400, IBM i, i5/OS for Power Systems, AS/400 are a Trademark of IBM Corporation, U.S.

Other company, product, and service names, which may be denoted by a double asterisk (**), may be trademarks or service marks of others.

Contents

Introduction.....	3
Goal	3
Version and release notes.....	3
Related publications.....	3
Conventions	3
Where to find updated information.....	3
Your comments.....	3
General description	4
Requirements.....	5
Runtime management	6
Server activation.....	7
Device distribution	8
Remote device activation	11
Commands	13
Command Skype (STRSKYPSVR)	14
Required parameters.....	14
Parameters not required	18
*ESCAPE Messages	18

Introduction

Goal

This user guide describes the components of the *Skype4i* product.

Version and release notes

The guide contains information compatible with version **V2R0M0**.

Related publications

[1]

http://www.jetlab.com/downloads/r400/R400-V4R0M0-Installation_Configuration-ENG.pdf

Describes the installation and setup procedures of the *R400Core* runtime on which the product *Skype4i* is based.

[2]

http://www.jetlab.com/downloads/skype4i/Skype4i-V2R0M0-WP001_Installation-ENG.pdf

Describes the procedure of fast installation of the *R400Core* and *Skype4i* products.

Conventions

Here is the list of the conventions used in this user guide:

The name *Skype4i* and its components are written in red, Times New Roman, bold-italic.

Source codes and System commands are written in Courier New.

PC stands for Personal Computer Windows.

Where to find updated information

At www.jetlab.com you can find the latest version of the reference book and software updates.

Your comments

Your comments are welcomed! Send them to developer@jetlab.com

General description

This user guide shows how the product *Skype4i* allows IBM i to interact with Skype.

These are the services offered by *Skype4i*:

- Call a Skype contact, a cell phone or landline
- Hang up
- Send an SMS to a cell phone or a message with the Skype chat
- Record phone calls and their duration
- Read a chat content
- Add a Skype user
- Send a file using the Skype chat

Requirements

The product *Skype4i* is a module of the *R400Core* product (runtime).

This user guide does not describe the installation and set up procedures of the runtime and *Skype4i*; see manual [1] for a description of *R400Core* and its installation and set up. See manual [2] for the procedure of fast installation of *R400Core* and *Skype4i*

On the PC where the *R400Device* will be activated, Skype must be installed and active.

The program can be downloaded from the website <http://www.skype.com>

A Skype account must be created.

During the installation follow the instructions of Skype.

Runtime management

The product *Skype4i* is based on the *R400Core* runtime.

It is necessary to have the runtime and one of its devices active on the PC where Skype is installed.

Following the standard installation procedure of *R400Core*, the JTJT040000 user is created on IBM i.

The user name is the same as the name of the installed library.

If you sign in with this user the *R400Core* management menu is shown .

Refer to manual [1] for the activation procedure of the server and the remote devices.

In this chapter is briefly described how to activate the server, how to distribute the device created by default during the runtime installation, and how to activate it locally or remotely.

Server activation

This is the procedure to be followed to activate the *R400Core* system.

It is assumed that the installation procedure was conducted keeping the defaults (the library has been reactivated maintaining the original name).

The suffix 040000 specifies the product version:

Version 04 Release 00 Change 00

— **Step 1:**

Connect to IBM i with user JTJT040000.

The password was chosen during the *R400Core* installation.

The main menu is shown.

— **Step 2:**

To activate *R400Core* select the option “Activate R400 server” (command STRR4SBS).

If the system is already active an alert will appear.

— **Step 3:**

To disable *R400Core* the select the option “Disable R400 server” (command ENDR4SBS).

Device distribution

In order to activate the *R400Device* remotely, it must be installed in the *R400RemoteController*.

It is assumed that the installation procedure was conducted keeping the defaults (the library has been reactivated maintaining the original name).

The suffix 040000 specifies the product version:

Version 04 Release 00 Change 00

Also it is assumed that the server is already active (see previous chapter).

This is the procedure to follow:

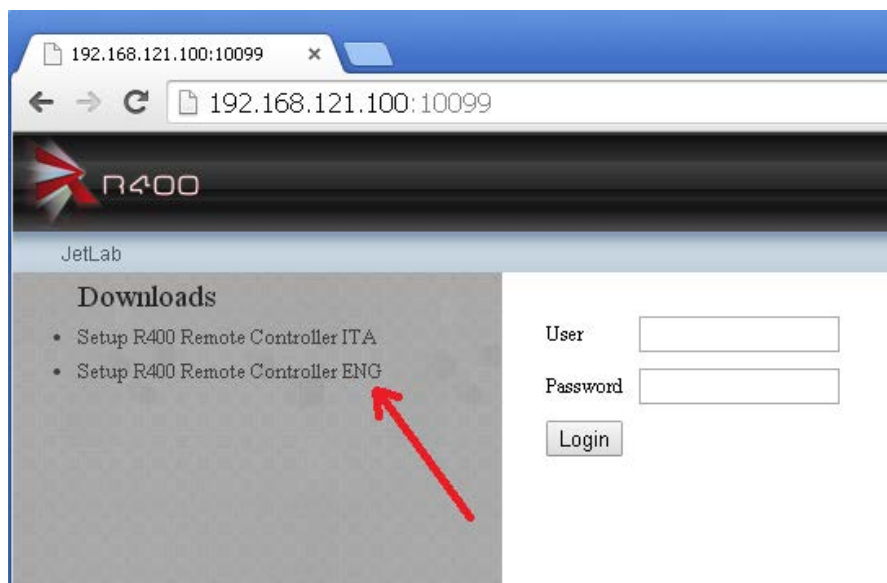
Step 1

Install R400RemoteController

Go to this website

<http://<IP>:10099>

Install on PC the *R400RemoteController* program which is required to activate devices remotely distributed.



Follow the guided installation procedure.

Step 2

Install the Device in the R400RemoteController

Access the IBM i system providing a user and a password.

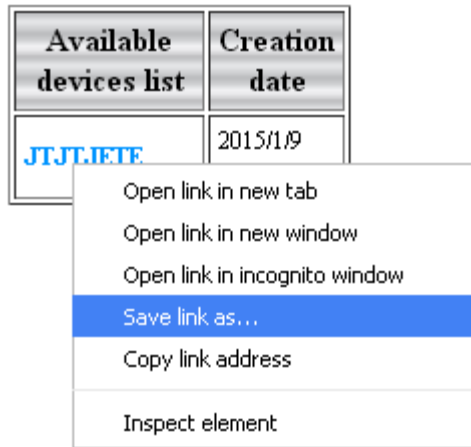


The list of the devices created in the *R400* runtime is shown.

Warning! If error 9999 appears, it means that servers were not activated on IBM i.

Run the following command on IBM i and repurpose the request:

```
STRHOSTSVR SERVER (*ALL)
```



Proceed with the device download, then activate the file.

The following screen will be shown:



Messages could be “Device already installed” or “Device installed successfully”.

Pressing OK the device will be activated by *R400RemoteController*.

When the *R400Device* is active, a green icon will appear in the accessory bar:



Remote device activation

It is assumed that the installation procedure was conducted keeping the defaults (the library has been reactivated maintaining the original name).

The suffix 040000 specifies the product version:

Version 04 Release 00 Change 00

Also, it assumed that the device has already been distributed. See previous chapter.

This is the procedure to follow to activate *R400Device* a on PC.

Step 1:

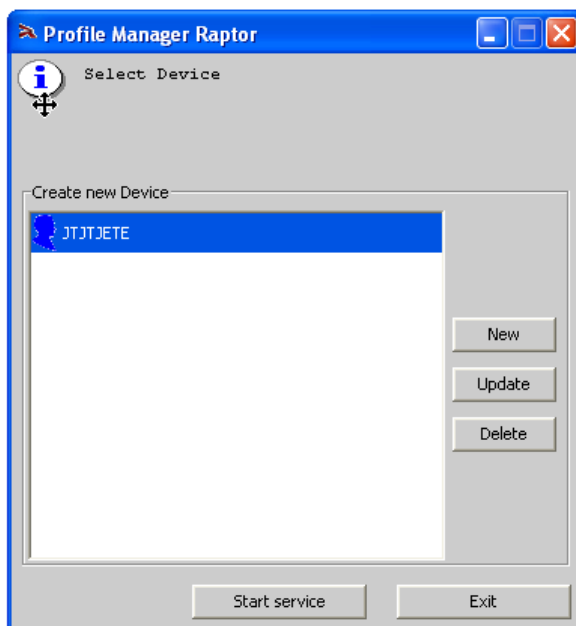
Activate the program *R400RemoteController*:

Start/All programs/R400 Remote Controller/R400 Remote Controller

or

click on the icon on the desktop

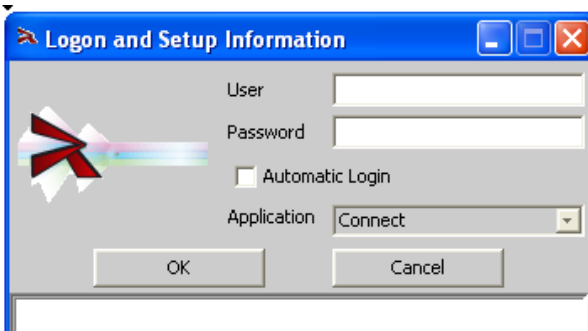
the following window is shown:



Step 2:

Select the *R400Device* which you want to activate and press "Activate the service".

The following screen is shown:



Insert a user name and a password. If you want the program to remember your credentials click on Automatic Login.

It will be possible to change this option later, following the procedure "Edit a *R400Device*".

If it is unable to connect or the cancel button is clicked then the *R400Device* icon will be red, or not active.

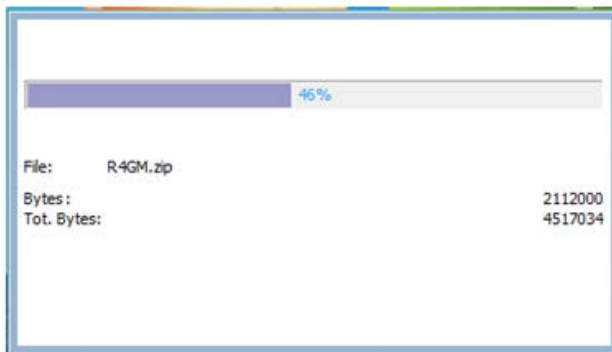


However, after successfully logging in, the *R400Device* icon will be green, or active:



Upon running the *R400Device* for the first time, the most recent *R400Module* will be installed.

In this case, a window similar to the following appears



Let this procedure finish.

Step 3:

In order to disable the device, select the *R400Device* green icon by clicking it with the right mouse button.

Select "Disable connection".

Commands

Following are the descriptions of the *Skype4i* commands.

In order to be effective, the commands must be activated with the following libraries in list:

Runtime library

```
ADDLIBLE JTJT040000
```

Skype4i library

```
ADDLIBLE R4SK020000
```

Also it is necessary to activate a remote device to which entrust the Skype request (see previous chapter).

Command Skype (STRSKYPSVR)

This command allows you to activate the following services, provided by Skype:

- Call a Skype contact, a cell phone or landline
- Hang up
- Send an SMS to a cell phone or a message with the Skype chat
- Record phone calls and their duration
- Read a chat content
- Add a Skype user
- Send a file using the Skype chat

Required parameters

Following is the description of the required parameters to be furnished to the command depending on the requested service:

Requested Skype service (SERVICE)

Identifies the type of service to be requested to Skype.

These are the possible values:

***CALL**

This is the default service.

Activates a phone or Skype call depending on the value assigned to the CNTCT_TYPE parameter.

***ENDCALL**

Hangs up a phone or Skype call depending on the value assigned to the CNTCT_TYPE parameter.

***MESSAGE**

Sends an SMS or a chat message depending on the value assigned to the CNTCT_TYPE parameter.

***CALLDUR**

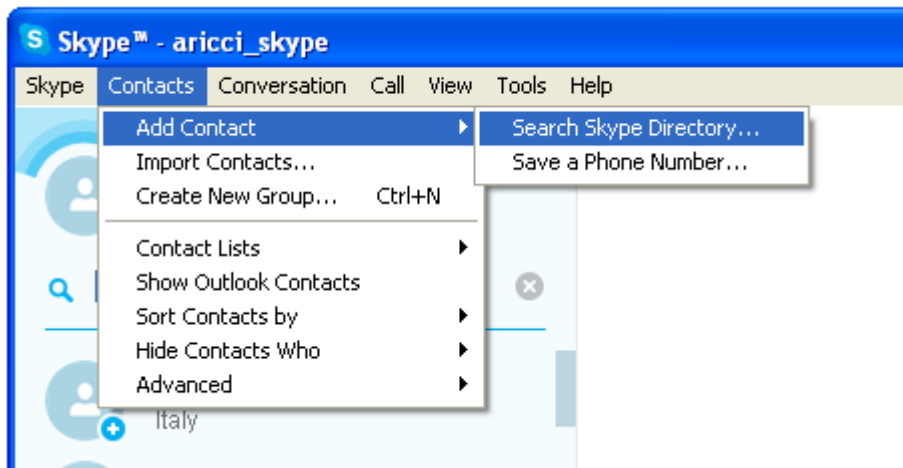
Registers the list of calls and their duration in the file indicated by the OUTPUT parameter.

***CHATMSG**

Register the list of chat messages in the file indicated by the OUTPUT parameter.

***ADDUSER**

Add a contact to the list. The following screen is shown:



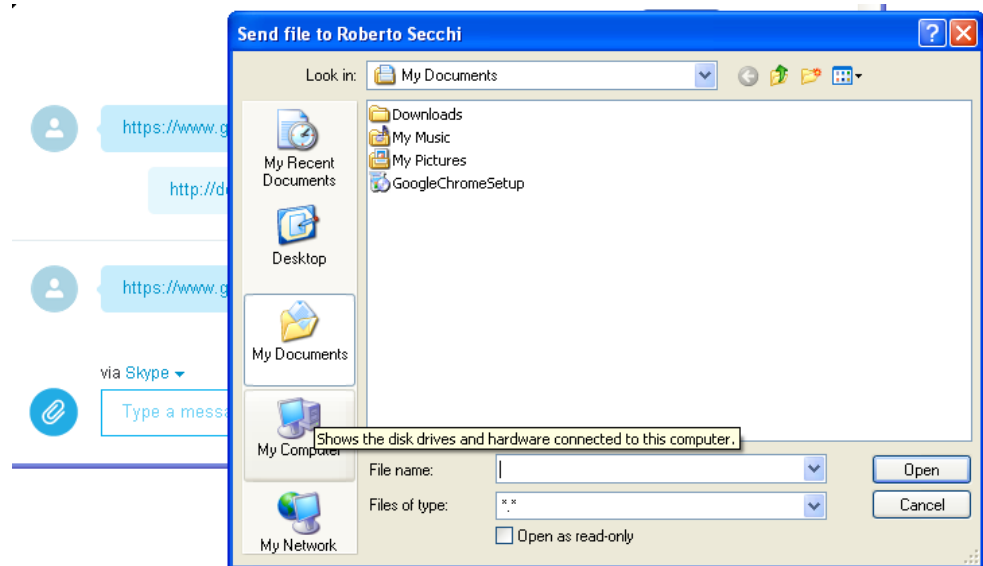
The user will have to select the contact to add to the list.

*SNDFILE

Attach a file to a Chat.

The following screen is shown:

the user will have to select the file downloaded from System i (in the image is the highlighted one) and click Open:



Device R400 (DEVICE)

Identifies the name of the *R400Device* to which request the service.

These are the possible values:

*USER

It is the default value and it specifies that the service has to be activated in the *R400Device* which is called as the user name connected to System i.

name

Name of the *R400Device* on which the service has to be activated.

Type of Skype contact (CNTCT_TYPE)

Identifies the type of contact on which activate the service.

These are the possible value:

***PHONE**

It is the default value.

The service is requested to a phone number.

***PROFILE**

The service is requested to a Skype contact.

Telephone number (PHONE)

This parameter is requested when the CNTCT_TYPE parameter is *PHONE.

Insert the phone number you want to request the service for.

Skype Profile (PROFILE)

This parameter is requested when the CNTCT_TYPE parameter is *PROFILE.

Insert the Skype profile you want to request the service for.

Call type (CALLTYPE)

Identifies the type of call when the parameter SERVICE is *CALL or *ENDCALL and the CNTCT_TYPE parameter is *PROFILE

These are the possible values:

***CHAT**

This is the default parameter.

The call his type "Chat" (it is not a video call).

***VIDEOCHAT**

The call is as video call.

Message sending (MESSAGE)

This parameter is requested when the SERVICE parameter is *MESSAGE.

Insert the message to be sent.

If the parameter CNTCT_TYPE is *PROFILE, the message will be sent to the chat of the Skype contact which was furnished in the PROFILE parameter.

If the parameter CNTCT_TYPE is *PHONE, an SMS will be sent to the phone number which was furnished in the PHONE parameter.

File sending (SENDFILE)

This parameter is requested when the SERVICE parameter is *SNDFILE.

Insert the file you want to sent through the chat of the profile furnished in the PROFILE parameter.

From date (yyyymmddhhmm) (DATETIME)

This parameter is requested when the SERVICE parameter is *CHATMSG.

These are the possible values:

***CURRENT**

This is the default value.

The messages received during the day are listed in the file indicted in the OUTPUT parameter.

Character value

Insert a date and time as it follows:

yyyymmddhhmm.

The messages received from the date/time furnished to the parameter are listed in the file specified by the OUTPUT parameter.

Number of elements (NUMLOG)

This parameter is requested when the SERVICE parameter is *CALLDUR.

These are the possible values:

***ALL**

This is the default value.

All the calls made with Skype are listed in the file specified by the OUTPUT parameter.

***LAST**

The last call made with Skype is registered in the file specified by the OUTPUT parameter.

Character value

Insert a number of calls to be registered in the file specified by the OUTPUT parameter.

Output file (OUTPUT)

This parameter is requested when the SERVICE parameter is *CALLDUR or *CHATMSG.

Specifies the name of the file where to list contacts.

These are the possible values for the output file:

SKINFO

This is the default value.

Name of the file where to list the contacts.

name

Name of the file where to list the contacts.

These are the possible values for the library:

QTEMP

In the QTEMP library

***CURLIB**

In the current library

name

Insert a library name

Parameters not required

Waiting time (TIMEOUT)

Determines the seconds of waiting for an answer by the *R400Device*.

This are the possible values:

010-120

From 10 seconds to 2 minutes.

*ESCAPE Messages

These are the possible *ESCAPE messages sent by the following commands.

ID messaggio	Testo messaggio
SKE1001	Operation successfully completed
SKE1002	Service encountered an error
SKE1004	Service not furnished
SKE1021	The &1 service is not valid
SKE1022	&1 parameter not furnished
SKE1027	&1 call type not valid
SKE1028	Impossible to delete file &1/&2
SKE1029	Error while compiling the source file *LIBL/&1(&2) in &3/&4
SKE1031	A type *PROFILE contact must be furnished to the service *ADDUSER/*SNDFILE/*CHATMSG.
SKE5002	Generic error
SKE5003	Contact not furnished
SKE5004	Service not furnished

SKE5005	Contact not found
SKE5006	Service not available
SKE5007	Error while sending the message
SKE5008	Message not furnished
SKE5009	Error while activating the Skype call
SKE5010	Error during the Skype setup
SKE5011	Error while activating the video call
SKE5012	Error during the call hang up
SKE5013	Error while recovering chat messages
SKE5014	Error while adding a new Skype contact
SKE5015	Error while sending a file through chat
SKE5016	File to be sent through chat not furnished
SKE5017	Error while recovering the call list
SKE5018	Error while reading the date
SKE5019	Error while downloading the file
SKE5020	Furnish a valid contact name (no blank characters allowed)